



# Howard County Mental Health Authority Overview

Howard County Mental Health Authority  
March 23, 2017

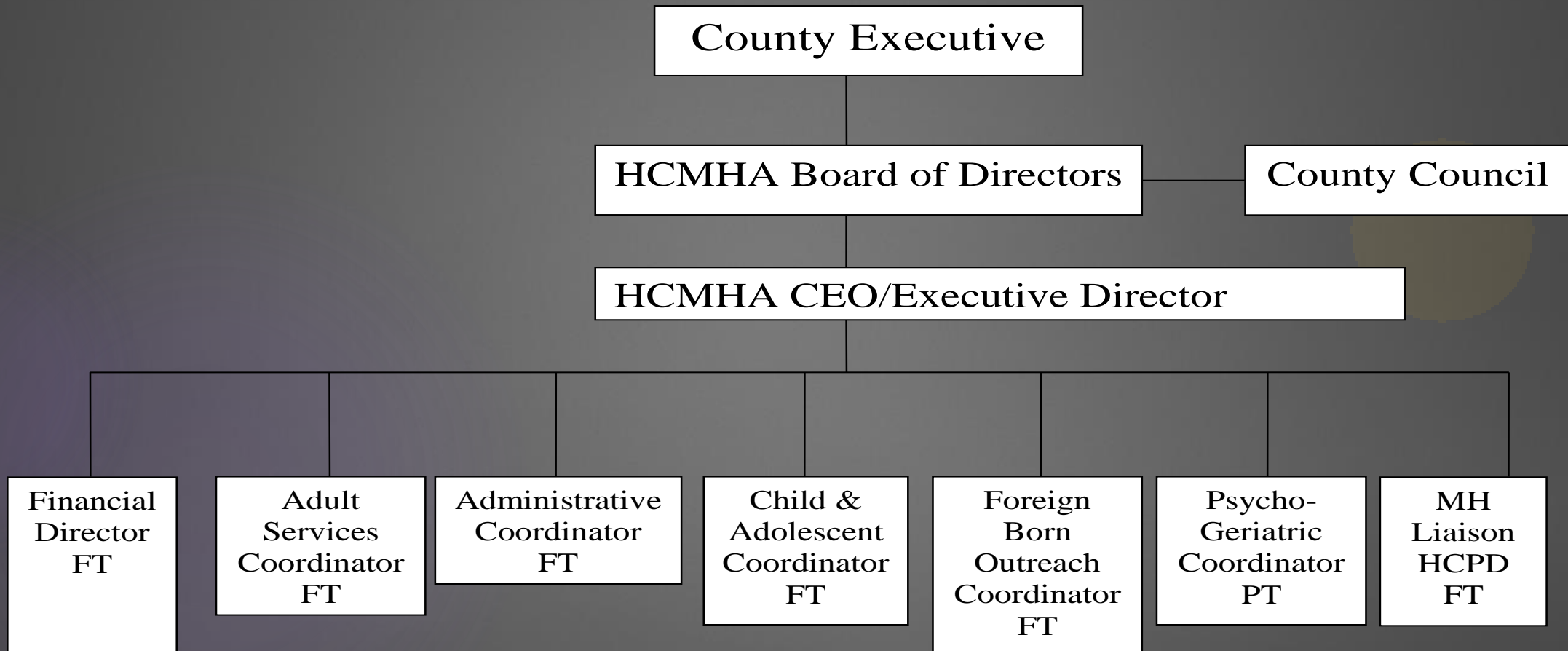
# Mission, Vision, Values

- ▶ **MISSION:** To insure the availability of quality mental health services and provide leadership in the county on mental health issues through education, prevention, community and interagency partnerships to better serve the broader community.
- ▶ **VISION:** There will be a comprehensive and accessible array of services to assist individuals in achieving recovery and developing resilience and reaching the highest level of participation as productive and contributing citizens in community life.
- ▶ **VALUES:**
  - ▶ Basic Personal Rights
  - ▶ Responsive System
  - ▶ Responsibility
  - ▶ Community Education
  - ▶ Family and Community Support
  - ▶ Management and Accountability
  - ▶ Participation in Community Life
  - ▶ Collaboration

# Purpose

- ▶ The Howard County Mental Health Authority (HCMHA) is responsible for planning, managing, and monitoring publicly funded mental health services in Howard County.

# Howard County Mental Health Authority (HCMHA) Organizational Chart



# Administrative Functions

<b>Governance</b>	<ul style="list-style-type: none"><li>*Create a vision for achieving results in behavioral health____</li><li>*Determine service delivery needs____</li><li>*Engage commitment and broad collaboration____</li><li>*Establish policy guidance____</li><li>*Make decisions on standards, goals and priorities____</li><li>*Review outcomes____</li></ul>
<b>Oversight Services</b>	<ul style="list-style-type: none"><li>*Coordinate evaluation and accountability for outcomes____</li><li>*Define baseline and results____</li><li>*Establish methodologies for evaluation____</li><li>*Manage information system____</li><li>*Monitor services____</li></ul>

# Administrative Functions

<b>Fiscal Management</b>	<ul style="list-style-type: none"><li>* Allocate resources___</li><li>* Manage funding received___</li><li>* Pursue development of additional funding___</li><li>* Serve as fiscal agent___</li><li>* Submit a behavioral health budget to local and state government___</li></ul>
<b>Planning</b>	<ul style="list-style-type: none"><li>* Complete behavioral health needs assessment___</li><li>* Identify resources___</li><li>* Plan/Develop new services and/or adapt existing services___</li></ul>
<b>Public Awareness</b>	<ul style="list-style-type: none"><li>* Command public and legislative attention and support___</li><li>* Coordinate and provide training___</li><li>* Emphasize monitoring and collaboration___</li><li>* Engage private sector commitment___</li><li>* Promote public awareness of behavioral health services___</li><li>* Focus on Prevention and Early Intervention___</li></ul>

# Inventory of Current Services

## ▶ HCMHA Services

- ▶ **Outpatient Treatment Services** are the most frequently requested services from the public behavioral health system. Howard County currently has four agencies licensed as outpatient mental health clinics (Way Station, Chase Brexton, MPB Group, and Family & Children's Services) within Howard County. In addition private practitioners are authorized to provide outpatient services as members of the public behavioral health system.
- ▶ **Case Management Services** are available to all age groups within Howard County who are eligible for services from the public behavioral health system. Intensive case management services are targeted to individuals who are not connected to other services and who need assistance in obtaining community services.
- ▶ **Vocational Services** are available to individuals with psychiatric disabilities who are receiving other services from the public behavioral health system. Supported Employment services assist an individual in obtaining employment and maintaining employment in the community by providing on-going support services to the individual once employed.

# HCMHA Services Continued

- ▶ **Foreign-Born Outreach Grant** HCMHA has grant funds to provide language interpreters for individuals who are eligible for publicly-funded outpatient treatment services.
- ▶ **Residential Rehabilitation Services** is a limited resource that is targeted to individuals with the greatest need. The HCMHA authorizes all placements into the Residential Program at Humanim and Way Station that are funded through the public behavioral health system.
- ▶ **Psychiatric Rehabilitation Services** These support services are targeted to facilitate the development of an individual's independent living and social skills in order to promote integration into the community.



# HCMHA Services Continued

- ▶ **Crisis Beds** provide 24/7 intensive clinical support to an individual in a psychiatric crisis. Crisis beds can be used as an alternative to in-patient hospitalization, when appropriate, or as a step-down from an in-patient psychiatric unit when the individual needs continued clinical support post-discharge.
- ▶ **Mobile Crisis Team (MCT)** is a partnership between Howard County, the Mental Health Authority, the Police Department, and Grassroots. The MCT is a two member team of mental health professionals whose primary objective is to assist community members in handling and managing emotional, traumatic, or psychiatric crises. The MCT operates seven days a week from 9:00 a.m. to 11 p.m.
- ▶ **Assertive Community Treatment (ACT)** provides a mental health team that establishes and maintains a relationship with individuals who are unsuccessful in standard community treatment services. It is a highly individualized and comprehensive service that provides psychiatric services that include medication monitoring as well as case management.

# HCMHA Services Continued

- ▶ **Transitional-Age Youth Program (TAY)** HCMHA, in collaboration with Humanim, have designed this program to serve young adults between the ages of 18 to 24 who have received services funded by the Maryland public behavioral health system. The program is designed to provide ongoing flexible supports to transition-age youth so that they can successfully transition to adulthood.
- ▶ The **Healthy Transitions Grant** focuses on youth between the ages of 16 to 25 who have been diagnosed with a serious mental illness. The purpose of this grant is to:
  - ❖ Raise awareness of the challenges faced by youth with a psychiatric disability as they age into adulthood
  - ❖ Increase the early identification of mental health conditions among this population (ages 16 to 25).
  - ❖ Provide services and supports to meet the needs of youth as they transition into adulthood.
- ▶ **Maryland Community Criminal Justice Treatment Program (MCCJTP)** is a grant-funded program that provides a full-time mental health professional within the Howard County Department of Corrections at the Howard County Detention Center. Individuals in the Detention Center, who are diagnosed with a mental illness, are eligible for mental health treatment services while in the Detention Center and linkage to community services upon their release.
- ▶ **Psychogeriatric Consultant Services** is a grant-funded program that supports a part-time Licensed Clinical Social Worker (LCSW-C). Consultation and training is available to providers in the mental health and aging communities who are serving older adults with mental health needs.
- ▶ **Network of Care:** [howard.md.networkofcare.org](http://howard.md.networkofcare.org) is an online information site for individuals, families and agencies concerned with mental and emotional wellness. This online community provides critical information, communication and advocacy tools.

# Numbers Served by Publicly Funded Mental Health Services

- ▶ Early Childhood (Managed by Howard County Office for Children)

Early Childhood Mental Health Consultation Project:

FY13 48 children served; 85% maintained in their setting

FY14 40 children served; 85% maintained their setting

FY15 54 children served; 92% maintained in their setting

FY16 52 children served; 94% maintained in their setting

# Numbers Served by Publicly Funded Mental Health Services

Children and Adolescent Consumers Served Report (FY 17 is 7/1/16-8/31/16)

Program	FY 13	FY 14	FY 15	FY 16	FY 17-YTD
Assertive Community Treatment (ACT)					
Case Management Services	0	7	16	13	2
Outpatient Treatment Services	1181	1276	1398	1521	604
Psychiatric Rehabilitation Services	51	82	122	148	90
Residential Crisis Beds					
Residential Rehabilitation Program	2	0	1	2	0
Supported Employment Services	2	2	1	1	0

# Numbers Served by Publicly Funded Mental Health Services

Children and Youth Consumers Contracted Services FY 13-FY 17 (2/28/17)

Program	FY 13	FY 14	FY 15	FY 16	FY 17-YTD
TAY	12	12	10	N/A	N/A
Healthy Transitions	N/A	N/A	N/A	39	45
In Home	23	25	23	20	18
Youth TCM/CCO	N/A	N/A-Late Start	8	11	13

# Numbers Served by Publicly Funded Mental Health Services

## Adult Consumers Served Report

Program	FY 13	FY 14	FY 15	FY 16	FY 17-YTD
Assertive Community Treatment (ACT)	52	65	66	63	44
Case Management Services	92	102	67	37	27
Outpatient Treatment Services	3169	3707	4505	4862	1977
Psychiatric Rehabilitation Services	368	425	519	571	305
Residential Crisis Beds	27	43	61	83	17
Residential Rehabilitation Program	147	156	190	192	117
Supported Employment Services	190	234	230	250	141
<b>Case Management - FY 16 - Case management vender (Alliance, Inc.) closed its program</b>					
<b>Case Management - FY 17 - Humanim awarded contract to provide adult case management services</b>					
<b>FY'17: 07/01/16 - 08/31/16</b>					

# Numbers Served by Publicly Funded Mental Health Services

## Older Adult Consumers Served

Program	FY 13	FY 14	FY 15	FY 16	FY 17-YTD
Assertive Community Treatment (ACT)					
Case Management Services		6	5	1	0
Outpatient Treatment Services		45	55	59	12
Psychiatric Rehabilitation Services		20	17	19	19
Residential Crisis Beds					
Residential Rehabilitation Program		5	5	2	3
Supported Employment Services		9	6	5	1
<b>FY'17: 07/01/16 - 08/31/16</b>					

# Numbers Served by Publicly Funded Mental Health Services

## Mental Health Liaison/CIT

Program	FY 13	FY 14	FY 15	FY 16	FY 17-YTD
CIT Officers	15	20	*42	57	25
CIT Dispatch	N/A	5	10	5	0
CIT Security other	N/A	N/A	0	0	5
CIT Civilians	0	0	0	29	0
MHL follow ups	N/A	149	153	134	10
HCPD Requests	N/A	155	83	89	7

- CIT Officers Training FY 2015 increased from 1 CIT training to 2 CIT trainings per year.
- MHL Follow Ups: MHL position did not exist in 2013.
- MHL Follow Ups for FY 2016 did not start until mid- February 2016 due to current MHL did not begin working in Police Department and having access to Mental Health Reports until then.
- FY17 YTD is for January 2017 only.
- FY 17 Others CIT Trained: 2 Sheriff Deputy officer, 1 NSA and 2 WSSC



# Numbers Served by Publicly Funded Mental Health Services

## Foreign Born Services

Program	FY 13	FY 14	FY 15	FY 16
Number of Services	339	419	386	433
Number of Clients	35	34	30	31
Number of Interpretations	76	122	96	71
Number of Patients Using Interpreters	6	7	8	7

# Numbers Served by Publicly Funded Mental Health Services

Mobile Crisis Team (MCT) and Rapid Access Program (RAP)

Program	FY 13	FY 14	FY 15	FY 16	FY 17
MCT	1519	1456	1922	2713	<b>604</b> (Through 2/28/17)
Grassroots RAP	N/A	N/A	N/A	27	<b>34</b> (Through 2/28;/17)
Way Station RAP					<b>351</b> (Through 1/31/17)

# Numbers Served by Publicly Funded Mental Health Services

## Mental Health Correctional Specialist

Program	FY 16	FY 17 (Qtr 1)	FY 17 (Qtr 2)	FY 17 (Qtr 3)	FY 17 (Qtr 4)
MH Correctional Specialist	86	33	23		

# For More Information

Madeline Morey,  
CEO/Executive Director  
Howard County Mental Health Authority  
8930 Stanford Boulevard  
Columbia, Maryland 21045  
Phone: 410-313-7350  
Fax: 410-313-7374  
email [mmorey@hcmha.org](mailto:mmorey@hcmha.org)